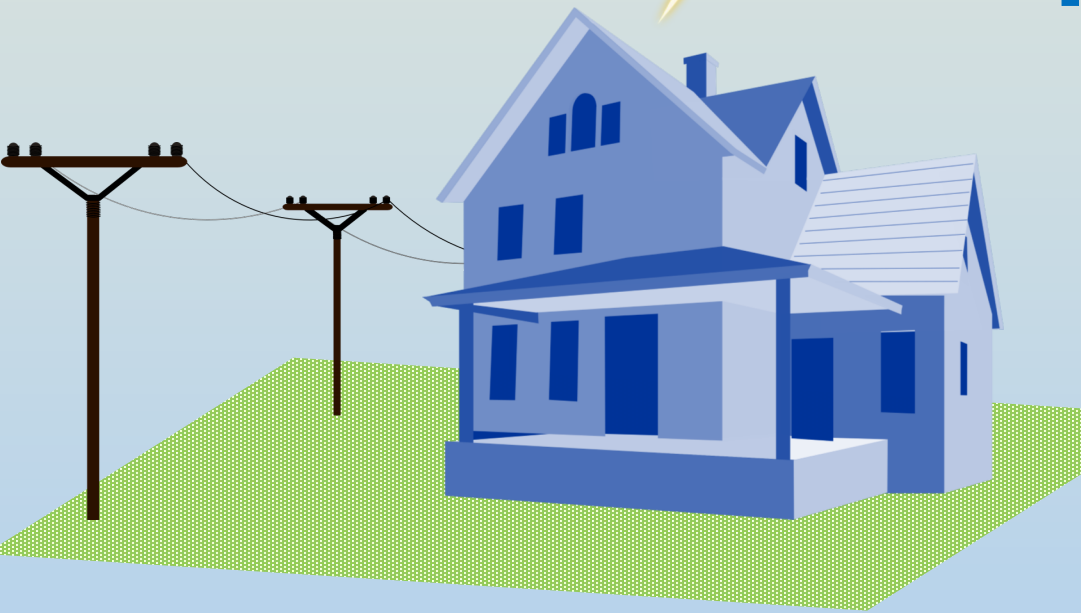


WHOLE HOME SURGE PROTECTION

Introducing the
**Tesco 240
MSA Type 1
Home Surge
Protector**



Installed at the meter by the
Littleton Electric Light Department.

For more details
& to schedule
installation, call
978-540-2222.



*Better
than typical
power strips
& plug-in
protectors!*

To help homeowners protect their property from dangerous lightning strikes and voltage surges, LELWD offers the Tesco 240 MSA Type 1 Home Surge Protector.



Whole Home Surge Protectors

- Protect appliances & electronics from experiencing electrical overload that could damage motors, circuits & infrastructure.
- Absorb significantly more energy than a typical power strip or plug-in protector; they also can be used for items such as HVAC equipment.

They protect against

- ☑ Harmful high voltages through the meter.
- ☑ Lightning strikes directly to the power grid.
- ☑ Utility and grid distribution fluctuation that may cause electric surges.
- ☑ Surges caused by heavy loads from nearby industry.

Consider A Surge Protection Network

To provide the most reliable protection, a whole house surge protection network is needed. This includes three levels of protection:

1. The whole home surge protector installed at the meter by LELWD
2. Surge protector hardwired directly to the home's circuit panel by a licensed electrician.
3. Point-of-use devices plugged into outlets for use with indoor electronic equipment.

Surge protectors cannot prevent or protect against:

- Lightning strikes or surges that bypass the surge protector, such as through electric fences for livestock, invisible fences for pets, the electric feed to a well, or other utility lines such as cable, dish or phone.
- Surges when there is damage to the neutral line.
- Outages, brownouts, trees on wires and downed power lines, such as those caused by major weather events, including hurricanes and snow storms.

For more details & to schedule installation, call 978-540-2222 or visit www.lelwd.com.

