

**BOXBOROUGH-LITTLETON WATER  
LINE EXTENSION PROJECT  
*UPDATE JANUARY 15, 2025***



# Meeting Process

- This informational webinar is being recorded. Recording will be available later from the Water Resources Committee and LWD pages, BXB-TV VOD and LCTV.
- Attendee videos and microphones will be off.
- Attendees should submit questions via the Q&A line on the Zoom toolbar.
- The moderator will direct questions to panelists.
- A record of questions and answers will be available.

# ACKNOWLEDGEMENT AND THANKS

THE WATER LINE PROJECT HAS RECEIVED OUTSTANDING SUPPORT

- LEGISLATIVE DELEGATIONS OF LITTLETON AND BOXBOROUGH
- MASSACHUSETTS DEPARTMENT OF ENVIRONMENTAL PROTECTION - BUREAU OF WATER RESOURCES
- MASSACHUSETTS DEPARTMENT OF TRANSPORTATION - SALT REMEDIATION PROGRAM

# Agenda

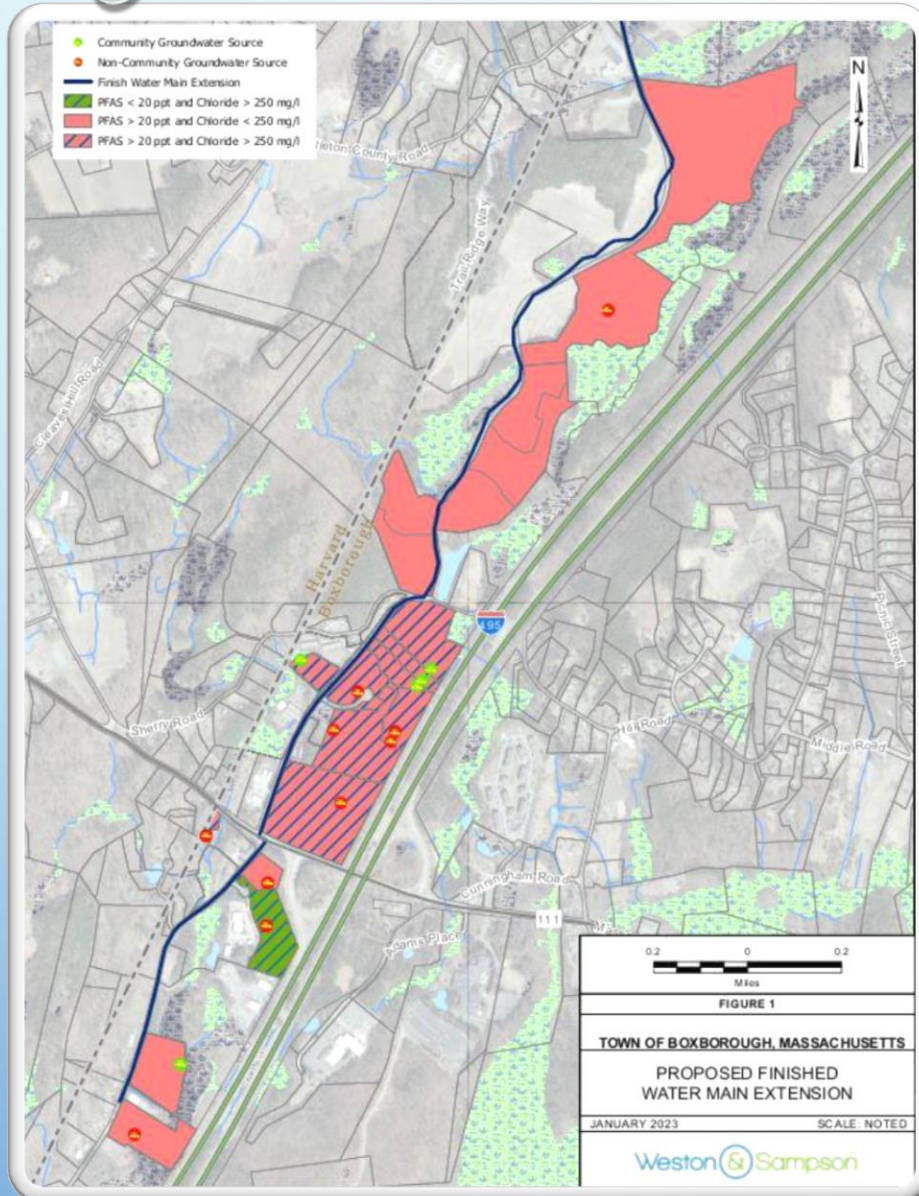
- Introduction of panel members
- Updates on Boxborough Water Supply project since July 2023
- Updates on Trumbull Well Project (formerly known as Taylor Street Well)
- Cost Explained
- Next Steps

# PANELIST INTRODUCTIONS

- LES FOX – CHAIR, TOWN OF BOXBOROUGH WATER RESOURCES COMMITTEE
- MATT SILVERMAN – WATER & SEWER SUPERINTENDENT, LELWD
- DAVID KETCHEN – ASSISTANT GENERAL MANAGER, LELWD
- MARIELLE STONE - DEPUTY REGIONAL DIRECTOR, MASSDEP
- BOB BOSTWICK - CENTRAL REGION DRINKING WATER SECTION CHIEF, MASSDEP
- LAURENE POLAND – SALT REMEDIATION PROGRAM, MASSDOT
- TARA MCMANUS – VICE PRESIDENT, WESTON & SAMPSON
- KEVIN MACKINNON – VICE PRESIDENT, WESTON & SAMPSON

# KEY EVENTS SINCE JULY 2023 PUBLIC FORUM

- GOVERNOR SIGNED CHAPTER 188 ACTS OF 2024: PROVISIONS OF BOXBOROUGH-LITTLETON INTERMUNICIPAL AGREEMENT (IMA) NOW PERMANENT.
- ALL STATE AND LOCAL PERMITS HAVE BEEN SECURED.
- CONSTRUCTION FUNDING SECURED THROUGH 0% INTEREST STATE REVOLVING FUND LOAN.
- ADDITIONAL FUNDING FROM MADOT, EXPLORING OTHER FUNDING OPTIONS.
  - INDIVIDUAL PROPERTIES MAY BE ELIGIBLE FOR ADDITIONAL FUNDING VIA SALT REMEDIATION PROGRAM (CONTACT LAURENE POLAND FOR MORE DETAILS).
- CONSTRUCTION HAS BEGUN (DECEMBER 2024).

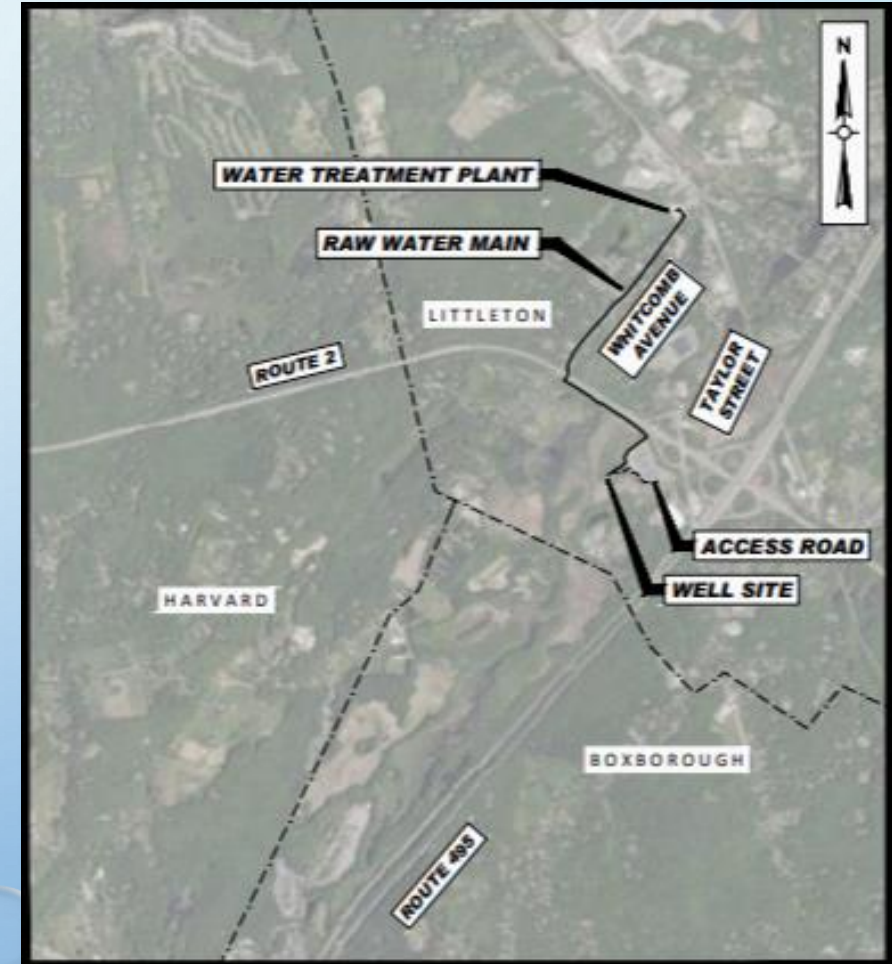


# BOXBOROUGH WATER SUPPLY EXTENSION

- WATER LINE TO EXTEND FROM LITTLETON TO PROPERTIES IN BOXBOROUGH.
- CLEAN TREATED WATER FROM LWD TO ADDRESS PFAS AND SODIUM CHLORIDE CONTAMINATION OF 11 PUBLIC WATER SYSTEM.
  - CONNECT TO LWD'S SYSTEM IN LIEU OF INSTALLING TREATMENT
- CJP & SONS BEGAN CONSTRUCTION DECEMBER 2024.

# TRUMBULL WELL & RAW WATER MAIN

- LELWD BOARD OF COMMISSIONERS HAVE DEDICATED WELL TO MR. BRUCE TRUMBULL
- GROUNDWATER WELL PERMITTED FOR 265,000 GALLONS PER DAY, POTENTIAL TO DOUBLE WITHDRAWAL IN FUTURE.
- C. NAUGHTON CORP. WON CONTRACT, HAS BEGUN WATER MAIN WORK ON WHITCOMB AVE (JANUARY 2025).
- DIRECTIONAL DRILLING UNDER BEAVER BROOK, ROUTE 2 EXPECTED IN FEBRUARY/MARCH.





# PROJECT SCHEDULE

Phase	2018	Jun-22	Dec-22	Jun-23	Dec-23	Jun-24	Dec-24	Jun-25	Dec-25	Jun-26	Nov-26
Conception/Discussion											
Design											
Permitting											
Construction											

# REVISED BOXBOROUGH PROJECT COSTS

- MASSDOT HAS COMMITTED TO CONTRIBUTING \$6,500,000 TOWARD THE BOXBOROUGH CONSTRUCTION COSTS AS COMPENSATION FOR WATER QUALITY DEGRADATION.

Total Estimated Project Cost (Boxborough)	\$12,418,358
Less MassDOT Contribution	-\$6,500,000
<b>REVISED PROJECT COST (Boxborough)</b>	<b>\$5,918,358</b>

- COSTS WILL BE RECOVERED VIA BETTERMENT FEES ASSESSED TO EACH BOXBOROUGH PROPERTY ALONG ROUTE.

# ABOUT COSTS

- BETTERMENT FEES WILL BE COLLECTED FROM **ALL BOXBOROUGH PROPERTY OWNERS ALONG WATER MAIN ROUTE** TO COVER PROJECT COSTS.
  - EXISTING LITTLETON CUSTOMERS WILL COVER THE LITTLETON PORTION OF THE PROJECT VIA REGULAR WATER RATES.
  - BETTERMENT FEES HAVE NOT BEEN FINALIZED, AS ALL COSTS AND ADDITIONAL FUNDING ARE SUBJECT TO CHANGE AT THIS POINT.
  - NON-PUBLIC WATER SYSTEMS ARE NOT REQUIRED TO CONNECT, BUT WILL BE CHARGED A BETTERMENT FEE REGARDLESS.
- THE HOME OWNERS ASSOCIATIONS WILL PAY THE CONNECTION FEE.
  - THOSE COSTS WILL LIKELY BE PASSED ON TO INDIVIDUAL UNIT OWNERS BY ADJUSTMENTS TO THE MONTHLY CONDO FEES.
  - THESE COSTS WILL BE OFFSET BY ELIMINATION OF THE COSTS OF MAINTAINING WELLS AND TREATING WATER.
- ALL OTHER CONNECTED BUILDINGS WILL PAY CONNECTION FEE, BETTERMENT FEES, AND WILL RECEIVE MONTHLY WATER BILLS FROM LELWD.

# LELWD CONNECTION FEES

<u>Pipe Size</u>	<u>Fee (domestic service pipe)</u>
1"	\$7,565
1 1/2"	\$17,021
2"	\$30,260
3"	\$68,086
4"	\$121,042
6"	\$272,344
Multi-dwelling (per apt. or living unit)	\$3,783

# LELWD WATER RATES

## BASE CHARGE

Meter Size	Monthly Base Charge
5/8"	\$7
3/4"	\$7
1"	\$17
1.5"	\$33
2"	\$53
3"	\$100
4"	\$167
6"	\$334

## USAGE CHARGES

Level	Monthly Usage (gallons)	FY24 Rate (per 1,000 gallons)
1	0 to 5,000	\$ 5.91
2	5,001 to 10,000	\$ 7.40
3	10,001 to 15,000	\$ 9.24
4	15,001 to 20,000	\$ 11.49
5	20,001 to 25,000	\$ 14.37
6	Greater than 25,000	\$ 17.96

### Debt Service Charge

All Usage	\$ 5.74
-----------	---------

# LELWD FIRE SPRINKLER DEMAND CHARGE

<u>Pipe Size</u>	<u>Yearly Fee</u>
Up to 2"	\$862.50
3" and 4"	\$1,150.00
6"	\$2,300.00
8"	\$4,600.00
10"	\$5,750.00
12"	\$6,900.00

# SMALL WATER SYSTEM EXPENSES

<b>Contract Operator &amp; Compliance Reporting</b>	<b>Spare Parts, Equipment, &amp; Materials</b>	<b>Cross Connection Surveys &amp; Backflow Prevention Device Testing</b>
<b>Treatment Chemicals &amp; Equipment</b>	<b>General Repairs &amp; Upgrades</b>	<b>Emergency Events</b>
<b>Waste Disposal / Residual Management</b>	<b>Capital Improvements</b>	<b>Storage Tank Inspections</b>
<b>Sampling &amp; Lab Analysis</b>	<b>Professional Services - Engineering, Legal, Etc.</b>	<b>Utilities - Electricity</b>

## NEXT STEPS

- CONTACT YOUR HOA OR PWS OWNER WITH ANY SPECIFIC QUESTIONS.
- PLEASE EMAIL [INFO@LELWD.COM](mailto:INFO@LELWD.COM) WITH ANY FOLLOW UP QUESTIONS.
- ALL PWS ARE EXPECTED TO CONNECT TO THE NEWLY INSTALLED WATER MAIN TO AVOID FURTHER VIOLATIONS OF WATER QUALITY STANDARDS.
- CONTINUE TO OPERATE PWS IN ACCORDANCE WITH ALL MASSDEP REQUIREMENTS.



## NEXT STEPS (CONTINUED)

- EACH PWS AND FUTURE CONNECTOR SHOULD DETERMINE REQUIRED SERVICE SIZE, DISTRIBUTION NETWORK UPDATES, FIRE PROTECTION NEEDS, ETC.
  - ENGINEER EVALUATION IS REQUIRED FOR SERVICE CONNECTION  $>1''$ .
  - COORDINATE WITH LELWD STAFF FOR CONNECTION AND FUTURE BILLING.
  - FAMILIARIZE WITH LELWD WATER USE RULES AND REGULATIONS.
- WATCH FOR UPDATES ON THE LELWD AND BOXBOROUGH WEBSITES, AND SIGN UP FOR ALERTS.
  - [LELWD.COM/BOXBOROUGH-WATER-MAIN/](http://LELWD.COM/BOXBOROUGH-WATER-MAIN/)
  - [BOXBOROUGH, MA | OFFICIAL WEBSITE](http://BOXBOROUGH,MA|OFFICIALWEBSITE)

# CONTACTS

- Littleton Electric Light & Water Departments – Matt Silverman, [msilverman@lelwd.com](mailto:msilverman@lelwd.com)
- MassDEP – Bob Bostwick, [robert.bostwick@mass.Gov](mailto:robert.bostwick@mass.Gov)
- MassDOT (Salt Remediation Program) – Laurene Poland, [laurene.Poland@dot.state.ma.us](mailto:laurene.Poland@dot.state.ma.us)
- Boxborough Water Resources Committee – Les Fox, [lfox@boxborough-ma.gov](mailto:lfox@boxborough-ma.gov)